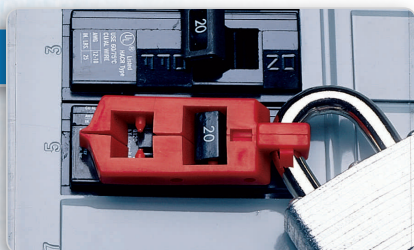
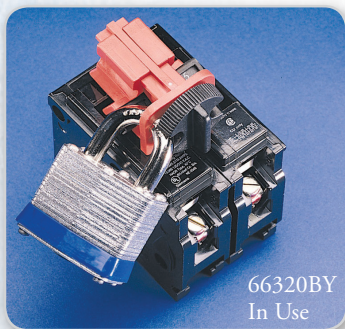
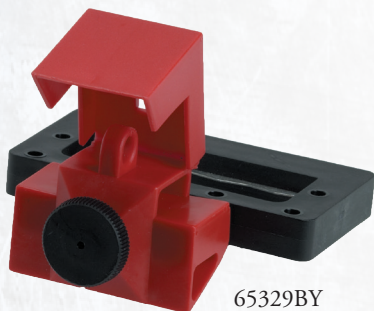
**NEW**

SPCB120TF

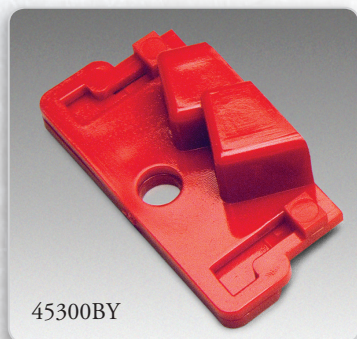
TF
TruForce™


65688BY In Use

66320BY
In Use

BRADY®
 WHEN PERFORMANCE MATTERS MOST™


65329BY



45300BY

SNAP-ON CIRCUIT BREAKER LOCKOUT

Designed to fit breakers with holes through the switch lever, this lockout features dual cavities to accommodate different size switch levers. Nylon construction. 120 VAC. Red.

Part No	Description
● SPCB120TF	Snap-On Circuit Breaker Lockout

SNAP-ON BREAKER LOCKOUTS

Designed for 120 VAC breakers that have holes in the switch tongue, these lockouts have dual cavities that accommodate different size switch tongues. They accept lock shackles up to $\frac{1}{2}$ " Dia and measure $2\frac{1}{8}$ " L x $1\frac{1}{16}$ " H x $\frac{3}{16}$ " W. Red.

Part No	Description
65688BY	Snap-On Lockouts, 6/Pkg
65387BY	Snap-On Lockout

UNIVERSAL MULTI-POLE BREAKER LOCKOUTS

Made of durable impact-modified nylon, these lockouts are compatible with most two- or three-pole breakers having a tie bar. Red.

Part No	Description
66320BY	Multi-Pole Lockouts, 6/Pkg
66321BY	Multi-Pole Lockout

OVERSIZED CLAMP-ON BREAKER LOCKOUTS

Made of durable polypropylene and glass-filled, impact-modified nylon, these lockouts control access to breakers. 480/600 VAC frame lockouts fit breaker switches up to $2\frac{1}{4}$ " wide and $\frac{7}{8}$ " thick. Red.

Part No	Description
65321BY	Clamp-On Lockout, 6/Pkg
65329BY	Clamp-On Lockout

BREAKER LOCKOUT

Made of durable polycarbonate material, this single-pole lockout is quick and easy to apply. Red.

Part No	Description
45300BY	Breaker Lockout

IN USE PICTURES MAY SHOW ITEMS NOT INCLUDED OR SOLD SEPARATELY.